

DS-620

brother
at your side



Brother professional mobile document scanner

The DS-620 makes scanning, sharing and organising your documents effortless. Powered simply by USB from your laptop, the powerful industry leading software takes care of the rest.

- 7.5ppm (8 seconds per page)
- USB powered
- Compatible with Windows® and Mac
- Up to 600 x 600 dpi
- Compact dimensions
- Professional software suite included

Compact, stylish and easy to use

Introducing the new stylish and compact DS-620; designed and built to make your life organised and more productive.

The DS-620 has the ability to scan all your documents (including plastic ID cards and receipts) ready to be saved to the cloud, making them available to view on your mobile device and meaning your data is always with you.



One touch scanning technology



High quality



Compact



USB Powered

Product features:

High quality

- Up to 600 x 600 dpi scanner resolution

Compact

- Compact dimensions - 290.5(W) x52.5(D)x36.7(H)
- Weighing only 400g

Easy to use

- One touch scanning technology
- Powered simply by USB

Compatibility

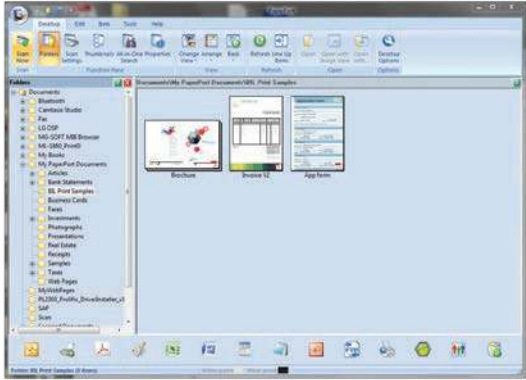
- The supplied TWAIN driver allows seamless integration into various document management systems

Fast and efficient

- Scan speed up to 7.5ppm (8 seconds per page in A4 at 300dpi) in monochrome and colour
- Scan to various destinations including: image, e-mail, file, app, printer, shared network folder, OCR, FTP, cloud and SharePoint®
- Scan anything from business cards, plastic ID cards, photographs and receipts up to A4 documents

The bundled suite of software includes:

The DS-620 is bundled with powerful software to become the perfect solution for document management and improved workflow.



Nuance™ PaperPort™ 12SE (Windows®)

Powerful document management, editing and PDF creation program with connector for Microsoft® SharePoint®.

NewSoft® Presto!® PageManager 9 (Mac)

Scan and organise digitised files...View, edit, e-mail or save files as searchable PDF, HTML, RTF, or TXT files.

Button Manager V2 (Windows®)

Configure several scan to options using the direct scan button on the scanner.

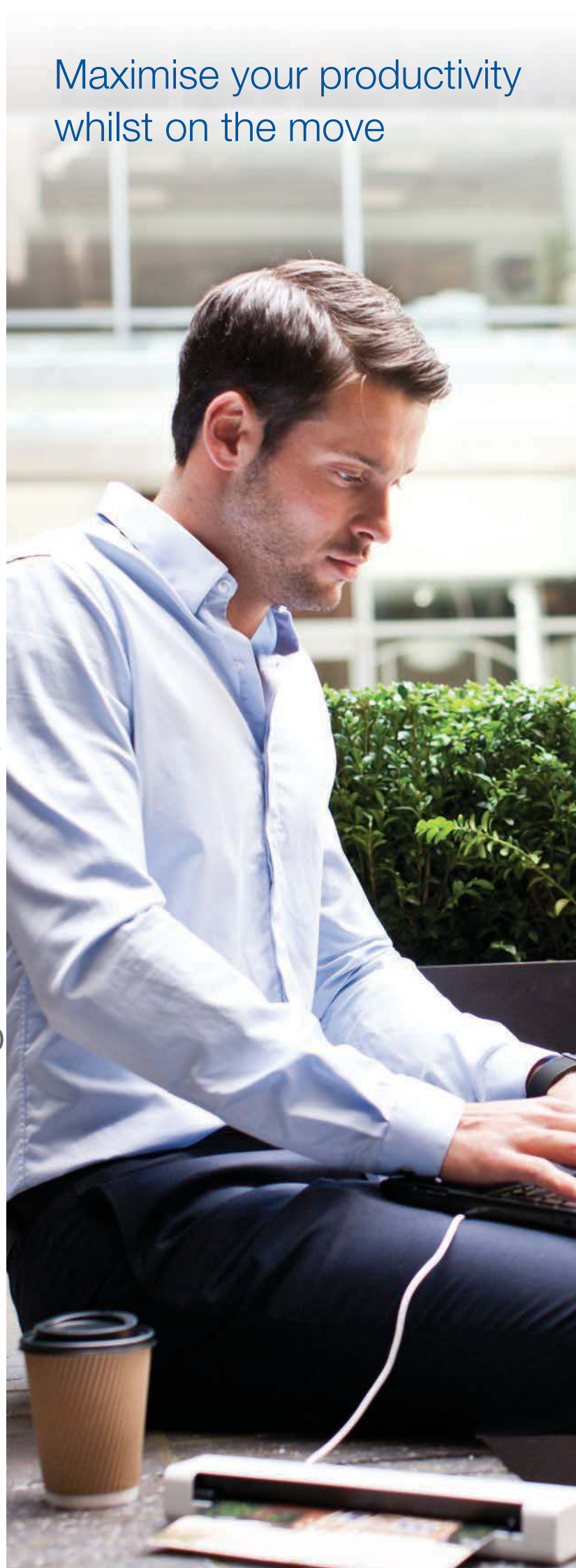
NewSoft® Presto!® BizCard 6 (Windows® and Mac)

Scan and export editable contact information directly to Microsoft® Outlook® and other contact management systems.

DSmobileCapture (Windows® and Mac)

A utility to capture and view scanned documents from your mobile scanner.

Maximise your productivity whilst on the move



DS-620

The Brother DS-620 mobile scanner is perfect for the mobile professional who needs a powerful scanner that will slide right into a briefcase or business bag. It's ideal for capturing business documents, as well as receipts, business cards, laminated identification cards, invoices, photographs, and more.



Versatile Media Handling



Fast Scan Speeds



High-Precision Scanning



Powered via the included USB Cable

Technical Specifications

General		Software for Mac	
Image Sensor	CIS (Contact Image Sensor)	DsMobileCapture	Easy to use scan software
Paper Sensor	Electro-Mechanical	NewSoft® Presto!® BizCard 6	Global business card management solution
Interface	Hi-Speed USB 2.0	PageManager 9	Document management & sharing program
USB Cable	Included		
Scanning		Paper Handling	
Standard Mono & Colour		Paper Input	1 sheet
Scan Speed	7.5 ppm (8 seconds) A4 at 300dpi	Paper Sizes	Between 55mm - 215.9mm in width & 90mm - 812.8mm in length
Resolution Optical	Up to 600 x 600 dpi	Paper Weights	Between 60 g/m ² & 105 g/m ²
Resolution Interpolated	1200dpi		
Colour Depth	48-bit internal & 24-bit external		
Gray Scale	256 levels		
Supported File Formats	JPEG, TIFF, & PDF (standard, searchable)		
Scan to Destinations	Image, e-mail, file, app, printer, shared network folder, OCR, FTP, cloud and SharePoint®		
Scanner Driver		Weights & Dimensions	
Windows®	TWAIN & WIA (Windows® 8, Windows® 7, Windows Vista® & Windows® XP)	With Carton	352(W)x 232(D)x 60mm(H) 980g
Macintosh	TWAIN (Mac OS X 10.6.X, 10.7.X, 10.8.X)	Without Carton	290.5(W)x 52.5(D)x 36.7(H) 400g
Linux	TWAIN and Scan App		
Software for Windows®		Environment	
DsMobileCapture	Easy to use scan software	Power Requirement	USB bus-power 5V DC
Button Manager V2	One touch scanning to e-mail, File, app, folder, FTP or printer	Power Consumption (Scanning)	2.5W
Nuance™ PaperPort™ 12SE	Scan, share, search and organise documents on your PC	Power Consumption (Ready)	1W
	Global business card management solution	Sound Pressure Level (Active)	50dBs

¹Requires software that comes bundled with the machine

Contact :

brother
at your side



facebook.com/brotheraustralia
www.brother.com.au